



**Tim Klock**

*SawNut*

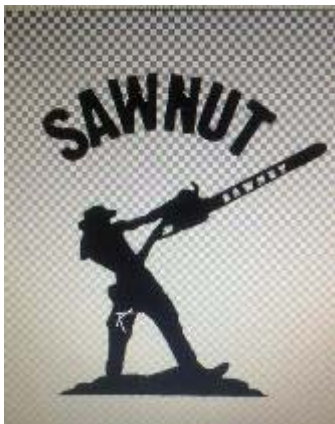
Altoona, Pa



**Topics:** *Carving Safety..... Chainsaw  
Maintenance..... Choice of Wood..... Design.....  
Blocking..... .Forming..... Finer Details.....  
Finishing..... Marketing..... Tim's Takeaways*

# Bio- Tim Klock

- In 2003 Tim nearly destroyed his ankle in a timber framing accident. During the year long recovery he started carving with a chainsaw to keep from going crazy. Four months after carving his first bear, he was invited to demonstrate his art at Blair county's Keystone Fair. Three years later, he was competing in the Echo cup Championship in Oshkosh, Wisconsin. He has also competed in the U.K. at the English open and carved in Carrbridge, Scotland since 2011. Tim is looking forward to another trip across the pond this year.
- When he's not traveling and competing, he can be found at his studio in Altoona, PA doing commission work and giving lessons to help other artists achieve their dreams and goals. He is a 'Vous regular since 2004. Tim accredits half of his knowledge on carving to the carvers that attend the event.



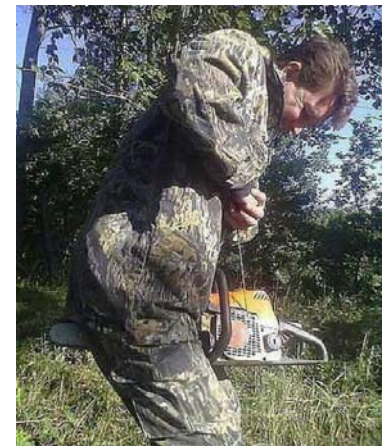
[sawnut1965@gmail.com](mailto:sawnut1965@gmail.com)

<https://www.facebook.com/timothy.klock.9>



# Safety- *I love me and I love you, too!*

- Cage myself in- I am dangerous
- Always wear chaps, safety glasses, hearing protection
- Saw safety
- Most dangerous part of saw- *the loose nut*
- Danger Zones



# Saw Maintenance- *If you have a saw that works, you can still carve, but...*

- Cutting Bar and Chain, bar grooming
- Breathing – air cleaner
- Cooling- blow it all out
- Fluids- tricks to cleaning oil and gas tank
- Sharpening chain and techniques

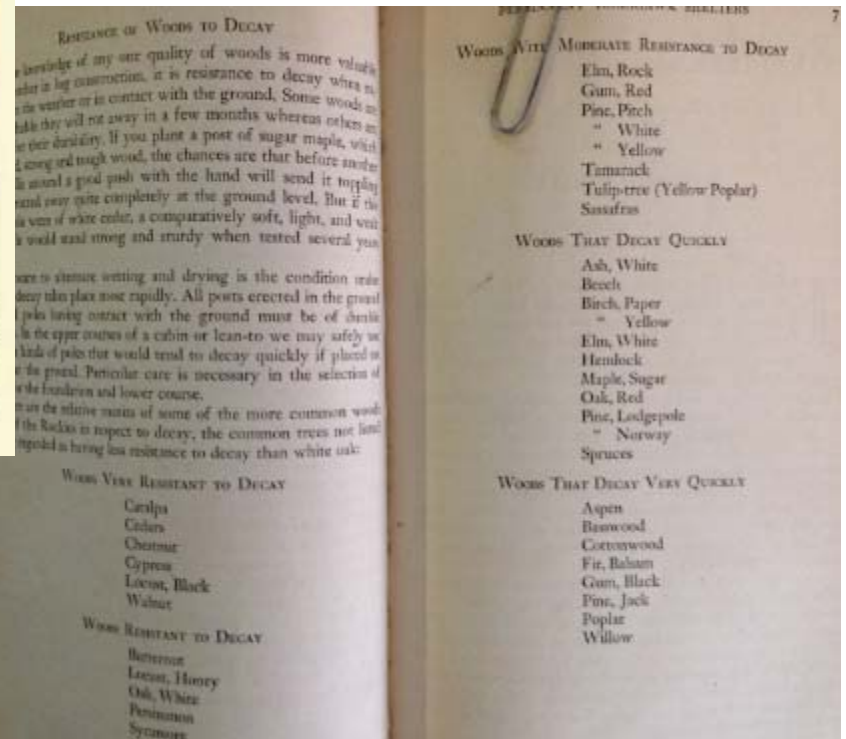


***My first carving of every day is 32 teeth***

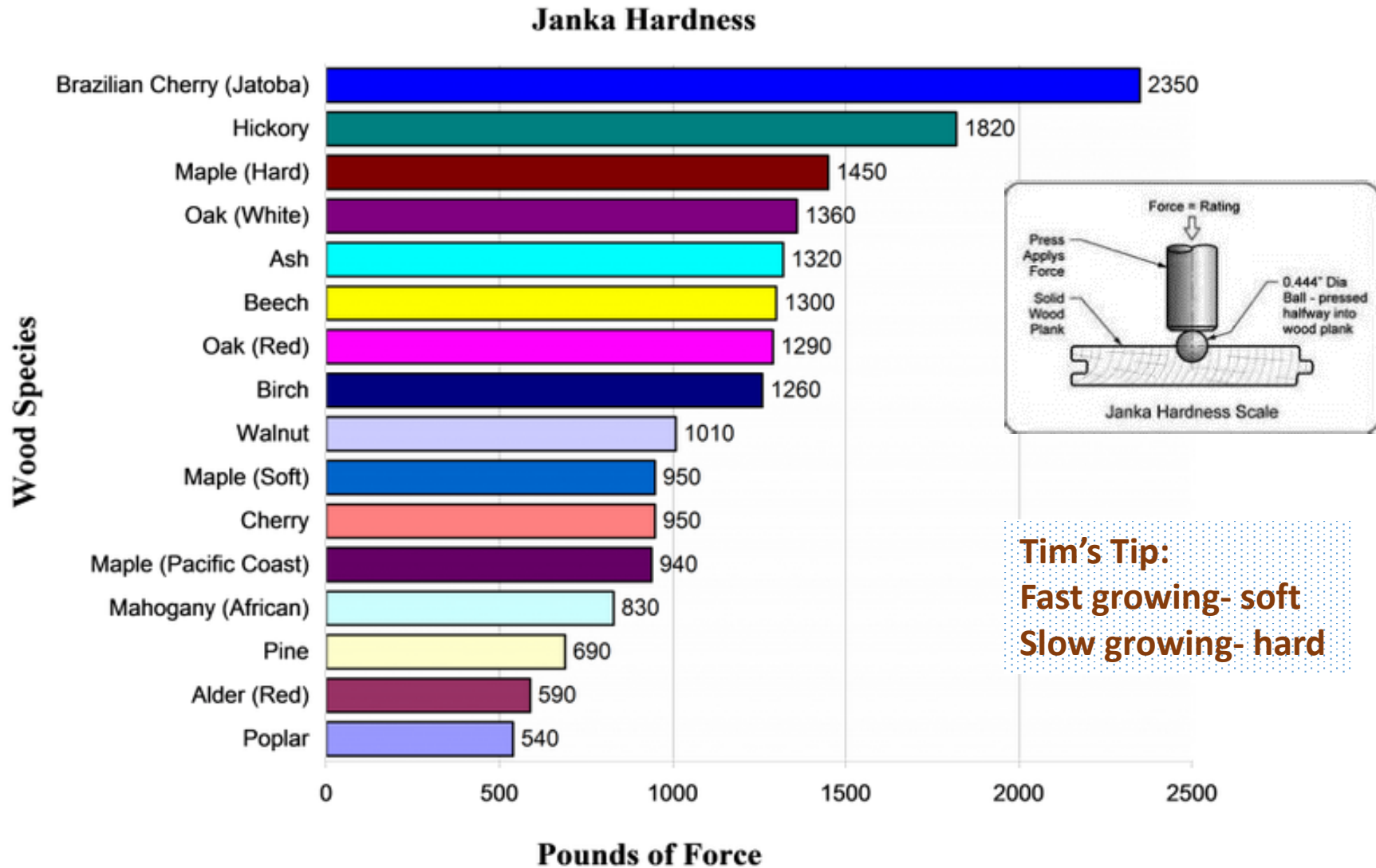
Browse to [“Tim’s Chainsaw Maintenance Video Ridgway 2015”](#) on YouTube



# Materials- *Is not just big wood but right wood*



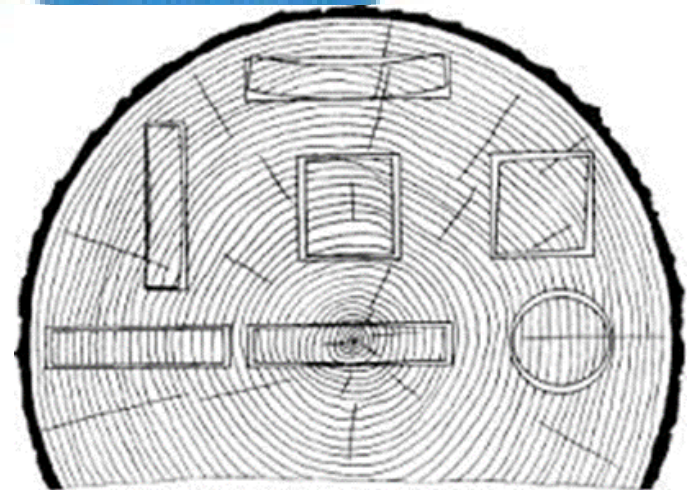
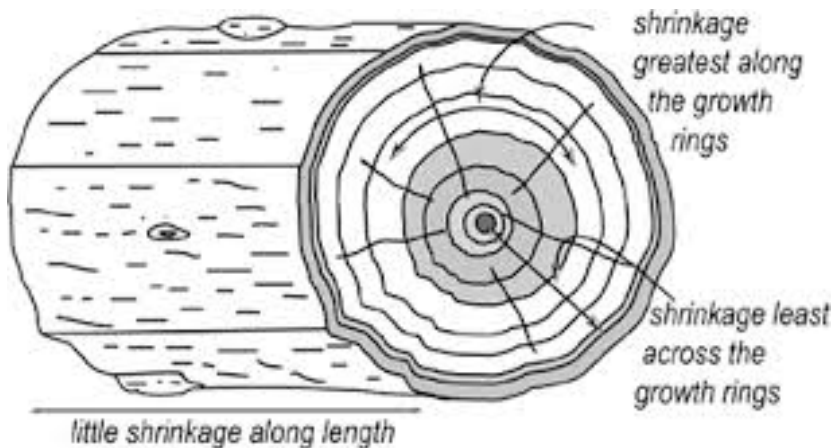
# Hardness Comparison- *Common North American Trees*



# Shrinkage

*Biggest **around** the log*  
*Some **across** the grain*  
*Little **along** the length*

## Typical Shrinkage Values for "Normal" Wood





## Designing the Piece – *Finding the flow*

- Flow and movement
- 3 points of interest- the triangle
- Artistic Balance







# Blocking the Form- *Quit cutting your scrap in half*

- Being efficient
- Life in the zone
- Always finish the blocking





**Forming-** *That looks cool, from a 100 ft away!*

- Be the piece!
  - The bear, the eagle, etc.
- Again, finding the flow
- No bent bones!
- Abstract carvings
- Again the triangle
  - most heads are triangle or oval
- Remember to flip your pencil!





## Finer Details- *Tricking the eye*

- Detailing
- Surfacing
- One side or the other (of the bar)
- Tricking the eye, fluffy



# Finishing – *Set it on fire!*

- Sanding
- Burning
- Sealing
- Staining
- Etc.



Style and Originality- *If I always do what I have always done, I'm only going to get what I always got*



# Marketing- *Bag of tricks*

- Bartering and trading  
*...would you take a bear for it?*
- Where am I ?  
*...don't carve a light house in Iowa, carve a silo*
- Staying alive  
*...I'd rather have a tank of gas than a bear in my truck*



© Mark Parisi, Permission required for use.

# Tim's Takeaways-



- What is art?
  - *The eye of the artist sees reality*
- Pricing?
  - *I'd rather have a tank of gas in the truck, then a bear in my bed*
- Competitions?
  - *Never learn to quick carve; never try to quick carve .... But when you can carve efficiently, you might give it a try.*
  - *Whether you are first or last, don't ever believe them.*

